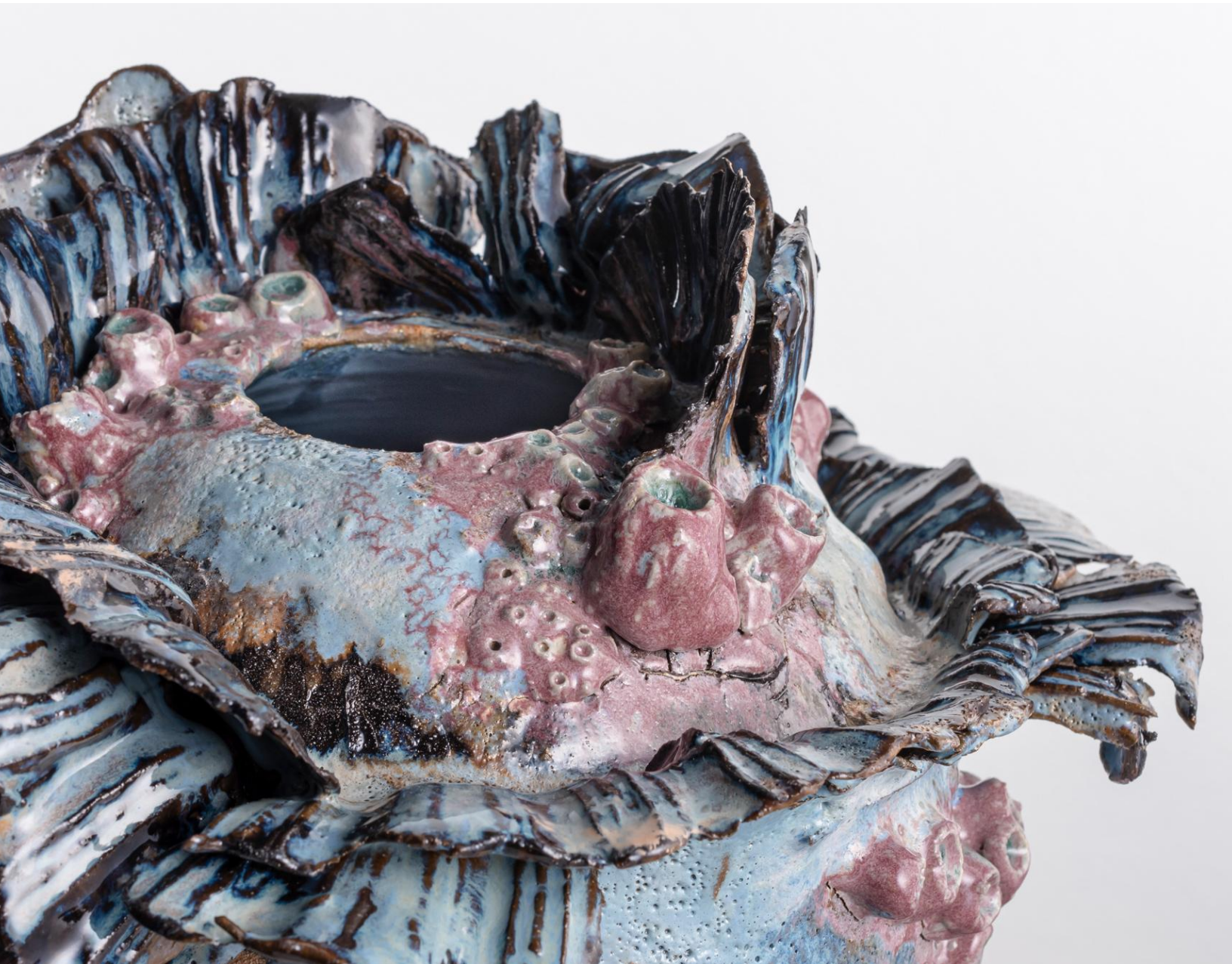
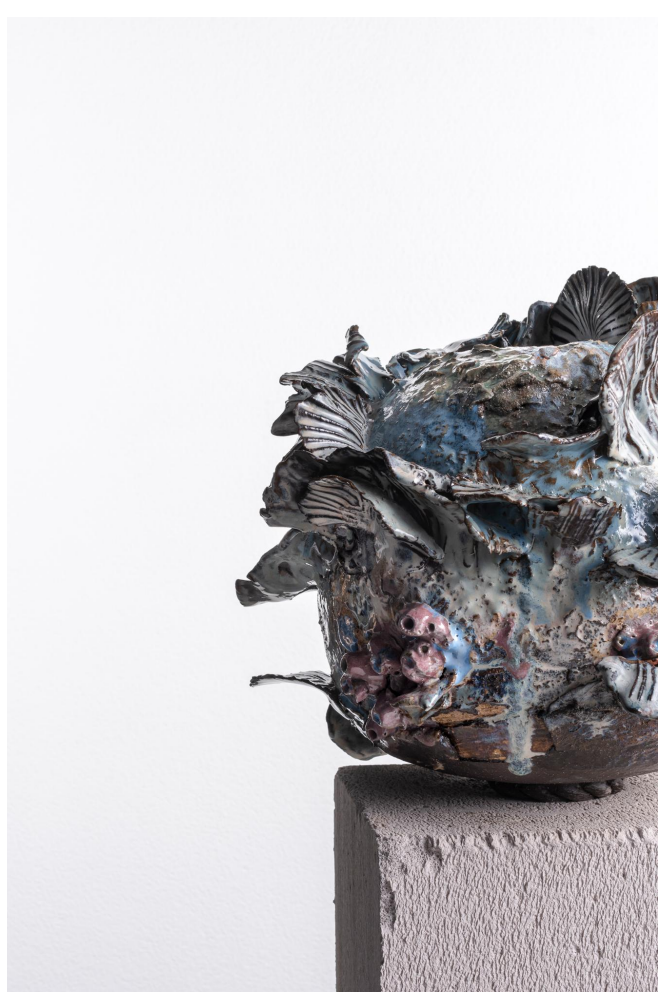


Motion Of The Deep

CARESSA GONSALVES | Clay With Caressa



2023 Nov | opening night 6-8pm Thursday 2nd
Instagram @ClaywithCaressa | claywithcaressa.com



I was raised on the northern beaches, growing up on the shoreline of Palm Beach. My family were the founders of gonsalves boatshed, a little fisherman's shack right by the ferry Wharf which was passed down from generations. Using the shoreline and all texture I remember from my childhood, my love for creating began as a fluid process.

Born from my childhood my affinity for the ocean runs deep, intertwining with the very essence of my being. It is a connection that resonates powerfully within my soul. in the wake of losing my parents at a tender age I veered away from confronting my grief, becoming detached and hollow. However, I discovered solace and healing through my artistic voyage as a ceramic artist. the vessel become my canvas. a medium through which I could navigate and articulate the tumultuous waves of emotion. Each ceramic creation became an exploration, an expression of the depths within me. giving form to the intangible currents of my heart.

I've grown into throwing vases, layering them with found clay slips, adding memories of textures from the boat-shed world I grew up in.

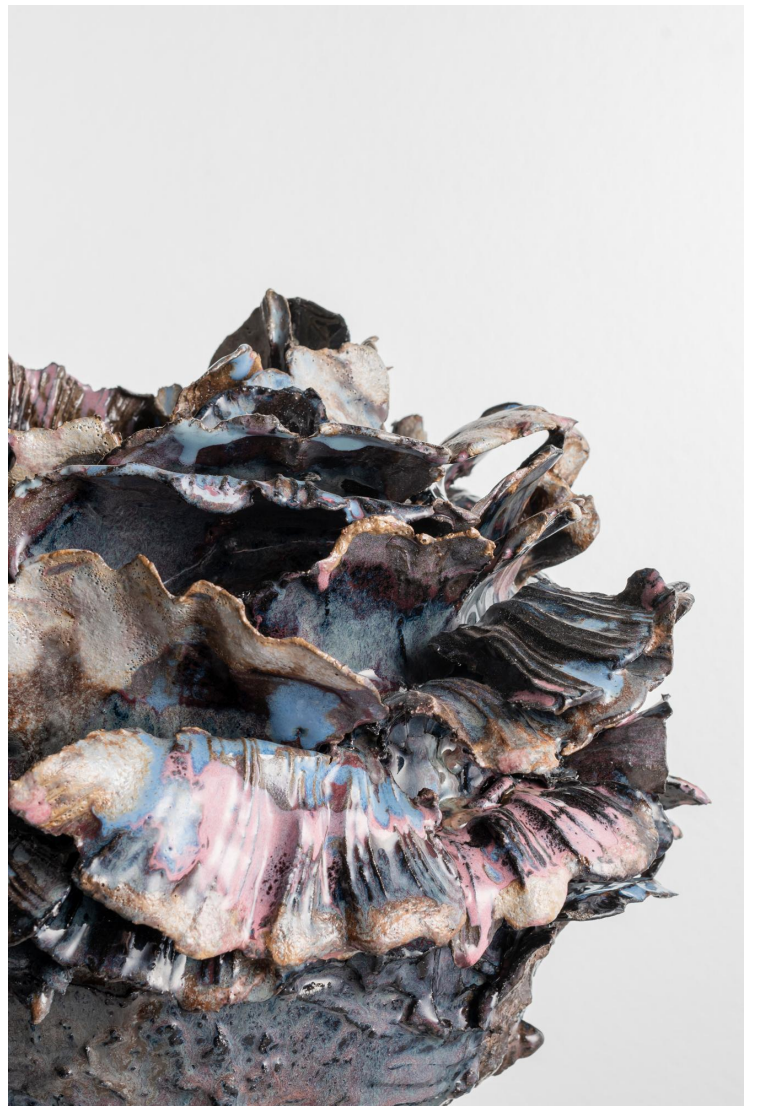
Natural imperfections in the ceramics recreate the movement and tension of waves crashing into the shoreline. Entwined within these pieces are all the things I had kept stored inside of me, eventually transcending through my hands, into my work.



Moments of the Sea vessel 1

materials | mixed clays with found
clay slip and layer glazes
H 35.5, W 36.5 D 41.5cm \$1900





Moments of the Sea

vessel 2 **SOLD**

materials | mixed clays with found clay slip and layer glazes

H 30, W 36.5 D 40cm \$1400



Moments of the Sea
vesse 3

materials | mixed clays with found clay
slip and layer glazes
H 35, W 35.5, D 18cm
\$1600



Moments of the Sea

vessel 4

materials | mixed clays with
found clay slip and layer glazes

H 26, W 33 D 19.5 cm

\$1400



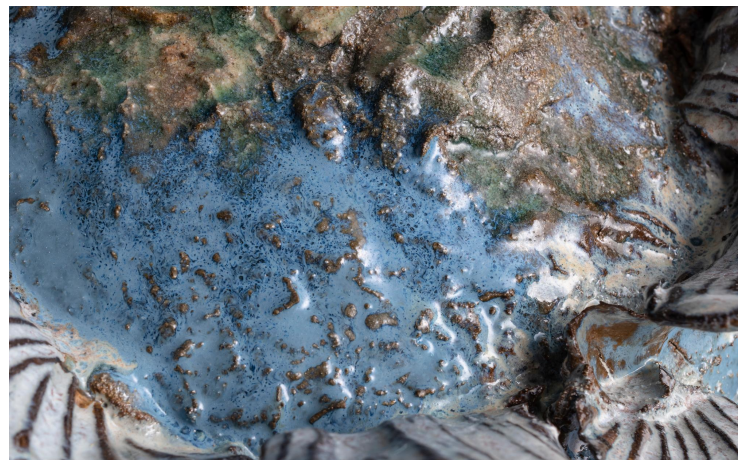
Moments of the Sea

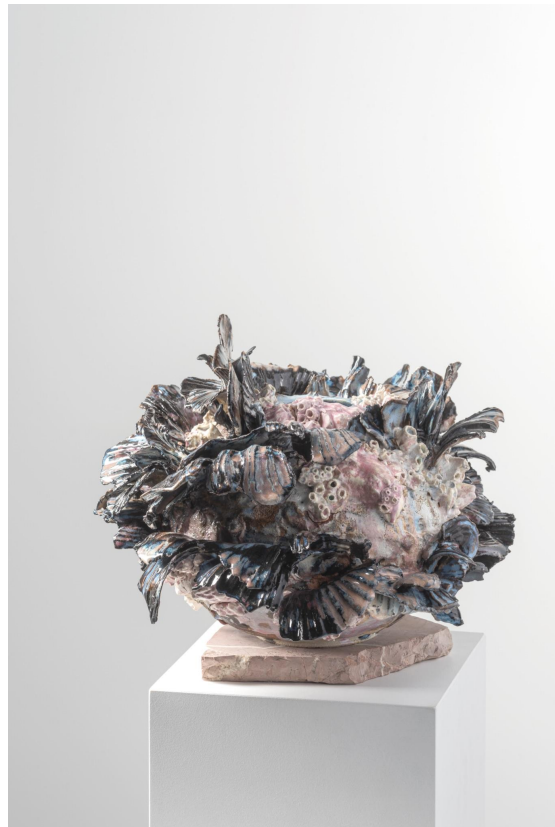
vessel 5

materials | mixed clays with found
clay slip and layer glazes

H 30, W 34.5 D 21.5cm

\$1400





Moments of the Sea vessel 6

materials | mixed clays with found clay

slip and layer glazes

H 23, W 33 D 32.5cm

SOLD \$1200





Moments of the Sea
vessel 7

materials | mixed clays with found clay slip and layer glazes

H 22, W 32 D 30cm

\$1100

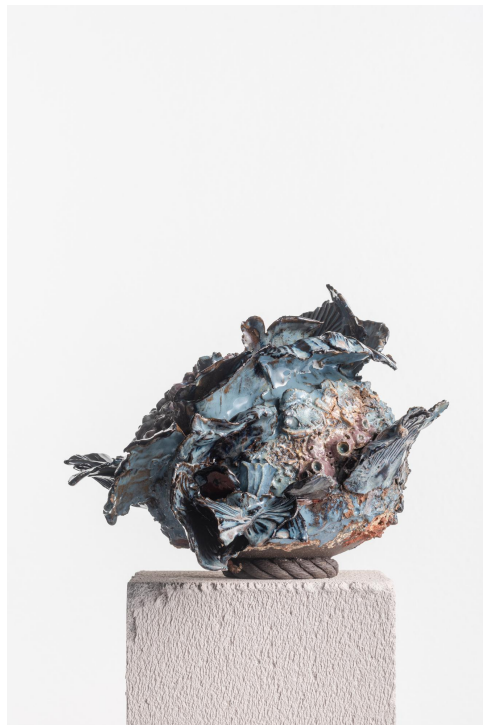


Moments of the Sea vessel 8

materials | mixed clays with found clay slip and layer glazes

H 23, W 32.5 D 13cm

\$950



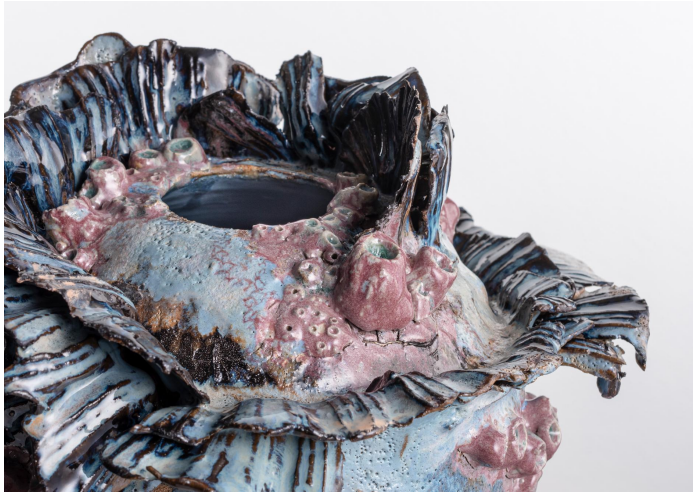
Moments of the Sea

vessel 9

materials | mixed clays with
found clay slip and layer glazes

H 21, W 30, D 15 cm

\$950



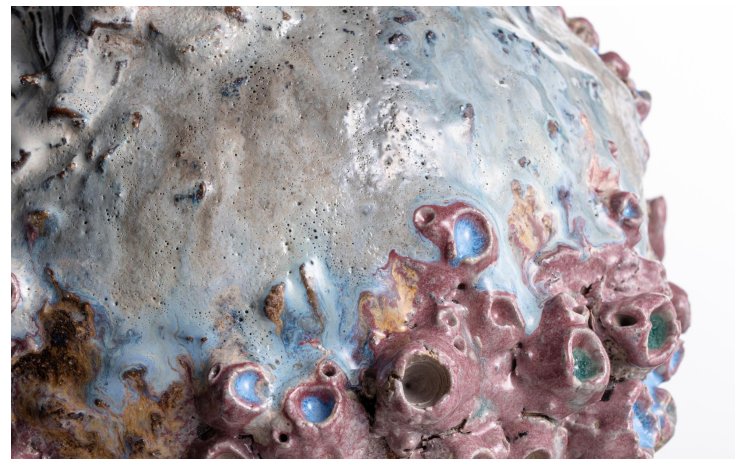
Moments of the Sea

vessel 10

materials | mixed clays with found
clay slip and layer glazes

H 30, W 34.5 D 21.5cm

\$940





Moments of the Sea vessel II

Materials | mixed clays with found clay slip and
layer glazes

H 21, W 23, D 14.5 cm

\$950





Moments of the Sea vessel 12

materials | mixed clays with found clay
slip and layer glazes

H 21, W 27, D 14cm

SOLD \$800



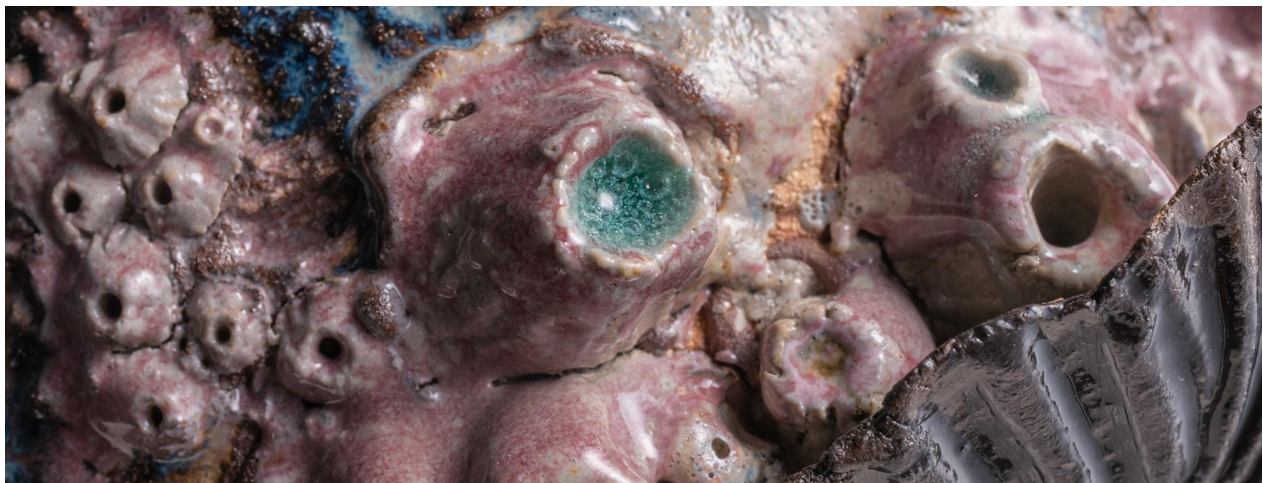


Moments of the Sea vessel 13

materials | mixed clays with found clay slip and layer glazes

H 21.5, W 25, D 14.5cm

\$800





Moments of the Sea
vessel 14

materials | mixed clays with found clay
slip and layer glazes

H 40.5 , W 37 , D 29.5cm

\$2100





ClamShell

Materials | porcelain,

Small - L 17 | W 14 | D 5 cm

\$135

Med - L 23 | W 16 | D 6 cm

\$220

Large - L 45.5 | W 25 | D 10.5cm

\$770

Navigating beyond the initial concept, my focus centres around the clam shells I inherited. My fascination lies in capturing the fluidity and form as I transform real shells into clay, a process delving into complexities beyond my initial expectations.

My idea remains unrefined, a work in progress. I challenge myself to explore new horizons, constantly pushing the boundaries of my creativities. Along the way, self-doubt often acts as a formidable barrier. Yet, I embrace a journey filled with trial and error, recognising that change and growth emerge from their experiences.



Champagne cup

Materials | porcelain,

Pair \$120 or four \$200



Nautilus Series

Materials | Midfire black porcelain

Large Plate - 21.5 | 20 cm \$65

Small Plate - 18 | 19 cm \$45

Mussel Plate - L 20 | 21cm W 12cm \$45

Scallop Plate - 17 | 18.5cm \$45

Side Bowls - 16.5 | 17cm \$45

Small Side Bowls - 14 | 13.5cm \$35

Making a sometime simple thing a little more. Wanting to make objects people can use, have function, but also are beautiful. And has something.... Not even sure what that is.

The shells texture is my obsession. Dripping with colour, using fluid glaze to highlight texture. Making a dinner set around aesthetics and function with texture displayed in the different vessels. Thinking of shape and wanting to make something I haven't seen before.

The beauty in the different shades of colours and the rich development of texture encapsulates the shore. How the water can be soft and flat, a canvas for the sky or dangerous, dark and wild. Light and sky display a rich colour pallet to play with.



The Studio, by Laing+simmons

Careel Bay Marina, Avalon Beach |
proudly supporting "VARIETY" Children's charity